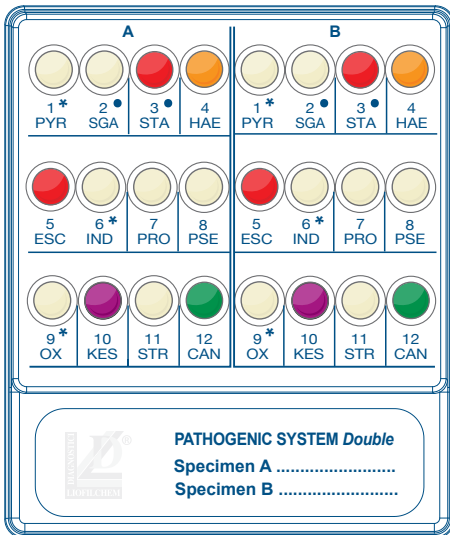


PATHOGENIC SYSTEM *Double*

Presumptive Identification of the main pathogenic microorganisms directly from several Clinical Specimens

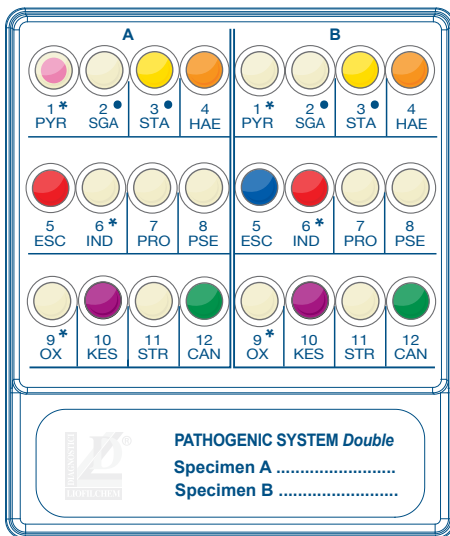


★ Several clinical specimens

Pharyngeal swab, Cutaneous swab,
Auricular swab, Ophthalmic swab,
Expectorate and other clinical specimens.

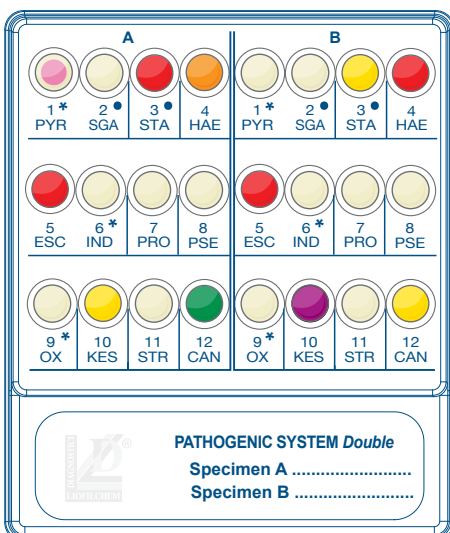
★ Direct microbial identification

Streptococcus pyogenes (Group A),
Staphylococcus aureus,
Haemophilus spp.,
Escherichia coli,
Proteus spp., *Providencia* spp.,
Pseudomonas spp.,
Klebsiella spp., *Enterobacter* spp., *Serratia* spp.,
Enterococcus spp. (Group D),
Candida spp.



★ Benefits

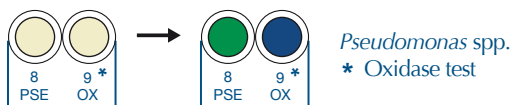
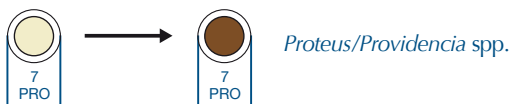
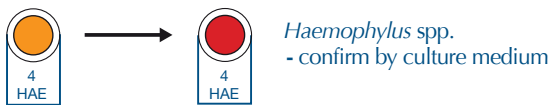
- ✓ Complete diagnosis
- ✓ Conveniently designed for two tests
- ✓ Save time and labor with direct testing
- ✓ Results in 18-24 hours
- ✓ Confirmation with serum agglutination tests
- ✓ Clear and well defined color changes
- ✓ Easy interpretation



PATHOGENIC SYSTEM *Double*

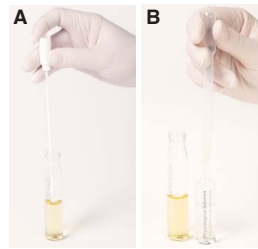
RESULTS

Identification



DESCRIPTION	PACKAGING	REF.
PATHOGENIC SYSTEM	40 tests	71678
KOVAC'S - REAGENT	4X25 mL	80271
VASELINE OIL	4X50 mL	80279
OXIDASE TEST DISCS	30 discs	88004
STREPTO A LATEX KIT	50 tests	96154
STAPH LATEX KIT	50 tests	96017

TEST PROCEDURE



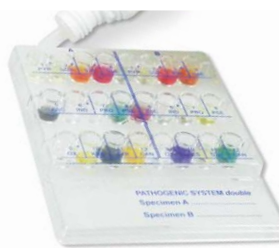
1

- Dip the swab of the specimen into a tube of nutrient broth and incubate at $36 \pm 1^\circ\text{C}$ for 2-4-6 hours.
- Transfer 0.5 mL of culture broth into the vial of Physiological Solution (**Specimen Suspension**).



2

- Add a Pyr Disc into the well 1-PYR.
- Add 0.2 mL of the Specimen Suspension into each well of the system, add one drop of vaseline oil into the well 10-UR.
- Incubate at $36 \pm 1^\circ\text{C}$ for 18-24 h.



3

- Add two drops of PYR Reagent into the well 1-PYR. The pink-red colouring of the disc within 5 minutes identifies *Streptococcus pyogenes* (Group A).
- Confirm the presence of *S. pyogenes* (Group A) by Strepto A latex kit.



4

- Confirm the presence of *Staphylococcus aureus* by Staph latex kit or coagulation test.
- Confirm the presence of *Haemophilus* spp. by inoculating a selective culture medium.



5

- Confirm the presence of *Escherichia coli* adding two drops of Kovac's Reagent into the well 6-IND (Indole Test).
- Confirm the presence of *Pseudomonas* spp. adding a disc of Oxidase test into the well 9-OX.



6

- Confirm *Candida* spp. by taking a drop from the positive well 12-CAN and watch for spores at the microscope (400x).
- Note down the test results on the form provided in the kit, or read and interpret by **automatic readers**.